

Intrada à5

Samuel Scheidt

Sopran 1

Sopran 2

Alt

Tenor

Bass

Measures 1-5 of the Intrada à5. The score is in 4/4 time with a key signature of one flat (B-flat). Soprano 1 and Soprano 2 have rests in measures 1 and 2. Soprano 1 enters in measure 3 with a half note G4, followed by a quarter note A4, and a half note B4 in measure 4. Soprano 2 enters in measure 3 with a half note G4, followed by a quarter note A4, and a half note B4 in measure 4. The Alto, Tenor, and Bass parts enter in measure 1 with a half note G3, followed by a quarter note A3, and a half note B3 in measure 2. The Alto part has a half note G3 in measure 3, followed by a quarter note A3, and a half note B3 in measure 4. The Tenor part has a half note G3 in measure 3, followed by a quarter note A3, and a half note B3 in measure 4. The Bass part has a half note G3 in measure 3, followed by a quarter note A3, and a half note B3 in measure 4.

6

Measures 6-10 of the Intrada à5. The score continues with the Soprano 1 and Soprano 2 parts. Soprano 1 has a half note G4 in measure 6, followed by a quarter note A4, and a half note B4 in measure 7. Soprano 2 has a half note G4 in measure 6, followed by a quarter note A4, and a half note B4 in measure 7. The Alto, Tenor, and Bass parts continue with their respective parts. The Alto part has a half note G3 in measure 6, followed by a quarter note A3, and a half note B3 in measure 7. The Tenor part has a half note G3 in measure 6, followed by a quarter note A3, and a half note B3 in measure 7. The Bass part has a half note G3 in measure 6, followed by a quarter note A3, and a half note B3 in measure 7.

10

Measures 11-15 of the Intrada à5. The score continues with the Soprano 1 and Soprano 2 parts. Soprano 1 has a half note G4 in measure 11, followed by a quarter note A4, and a half note B4 in measure 12. Soprano 2 has a half note G4 in measure 11, followed by a quarter note A4, and a half note B4 in measure 12. The Alto, Tenor, and Bass parts continue with their respective parts. The Alto part has a half note G3 in measure 11, followed by a quarter note A3, and a half note B3 in measure 12. The Tenor part has a half note G3 in measure 11, followed by a quarter note A3, and a half note B3 in measure 12. The Bass part has a half note G3 in measure 11, followed by a quarter note A3, and a half note B3 in measure 12.

15

Measures 16-20 of the Intrada à5. The score continues with the Soprano 1 and Soprano 2 parts. Soprano 1 has a half note G4 in measure 16, followed by a quarter note A4, and a half note B4 in measure 17. Soprano 2 has a half note G4 in measure 16, followed by a quarter note A4, and a half note B4 in measure 17. The Alto, Tenor, and Bass parts continue with their respective parts. The Alto part has a half note G3 in measure 16, followed by a quarter note A3, and a half note B3 in measure 17. The Tenor part has a half note G3 in measure 16, followed by a quarter note A3, and a half note B3 in measure 17. The Bass part has a half note G3 in measure 16, followed by a quarter note A3, and a half note B3 in measure 17.

19



System 19-22: This system contains measures 19 through 22. It features five staves. The top staff has a whole rest in measure 19, followed by eighth-note patterns in measures 20 and 22. The second staff has eighth-note patterns in measures 19 and 21, and a whole rest in measure 22. The third and fourth staves each contain a single half note in every measure. The fifth staff contains a single half note in every measure.

23



System 23-26: This system contains measures 23 through 26. The top staff has a whole rest in measure 23, followed by sixteenth-note patterns in measures 24 and 26. The second staff has eighth-note patterns in measures 23 and 25, and a whole rest in measure 26. The third staff has a half note in measure 23, followed by quarter notes in measures 24, 25, and 26. The fourth and fifth staves each contain a single half note in every measure.

27



System 27-31: This system contains measures 27 through 31. Measures 27-31 feature repeat signs. The top staff has a whole rest in measure 27, followed by eighth-note patterns in measures 28 and 30, and a whole note in measure 31. The second staff has eighth-note patterns in measures 27 and 29, and a whole note in measure 31. The third staff has quarter notes in measures 27 and 28, followed by a whole note in measure 31. The fourth and fifth staves each contain a single half note in every measure.

32



System 32-35: This system contains measures 32 through 35. The top staff has eighth-note patterns in measures 32 and 33, followed by a whole rest in measure 34 and a whole note in measure 35. The second staff has eighth-note patterns in measures 32 and 33, followed by eighth-note patterns in measures 34 and 35. The third staff has quarter notes in measures 32 and 33, followed by quarter notes in measures 34 and 35. The fourth staff has quarter notes in measures 32 and 33, followed by quarter notes in measures 34 and 35. The fifth staff has a single half note in every measure.

36

System 36-39: This system contains measures 36 through 39. It features five staves. The top two staves (treble clef) have a melodic line with eighth and sixteenth notes. The third staff (treble clef) has a bass line with quarter and eighth notes. The fourth staff (treble clef) has a bass line with quarter and eighth notes. The bottom staff (bass clef) has a bass line with quarter and eighth notes. The key signature has one flat (B-flat).

40

System 40-43: This system contains measures 40 through 43. It features five staves. The top two staves (treble clef) have a melodic line with eighth and sixteenth notes. The third staff (treble clef) has a bass line with quarter and eighth notes. The fourth staff (treble clef) has a bass line with quarter and eighth notes. The bottom staff (bass clef) has a bass line with quarter and eighth notes. The key signature has one flat (B-flat).

44

System 44-48: This system contains measures 44 through 48. It features five staves. The top two staves (treble clef) have a melodic line with eighth and sixteenth notes. The third staff (treble clef) has a bass line with quarter and eighth notes. The fourth staff (treble clef) has a bass line with quarter and eighth notes. The bottom staff (bass clef) has a bass line with quarter and eighth notes. The key signature has one flat (B-flat). Measure 48 ends with a double bar line and a repeat sign.

44

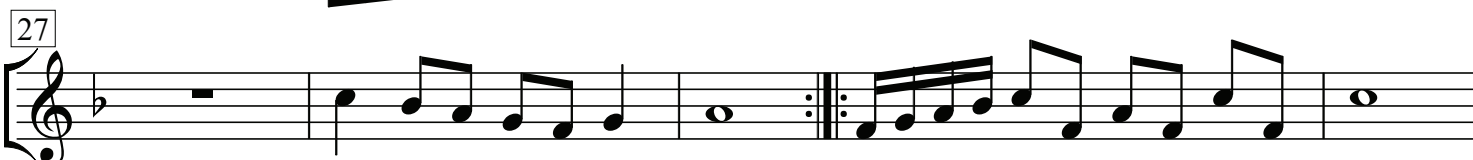
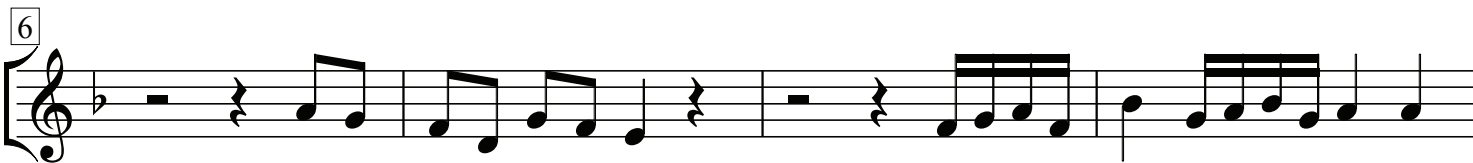
System 49-52: This system contains measures 49 through 52. It features five staves. The top two staves (treble clef) have a melodic line with eighth and sixteenth notes. The third staff (treble clef) has a bass line with quarter and eighth notes. The fourth staff (treble clef) has a bass line with quarter and eighth notes. The bottom staff (bass clef) has a bass line with quarter and eighth notes. The key signature has one flat (B-flat). Measure 52 ends with a double bar line and a repeat sign.

49

System 53-56: This system contains measures 53 through 56. It features five staves. The top two staves (treble clef) have a melodic line with eighth and sixteenth notes. The third staff (treble clef) has a bass line with quarter and eighth notes. The fourth staff (treble clef) has a bass line with quarter and eighth notes. The bottom staff (bass clef) has a bass line with quarter and eighth notes. The key signature has one flat (B-flat). Measure 56 ends with a double bar line and a repeat sign.

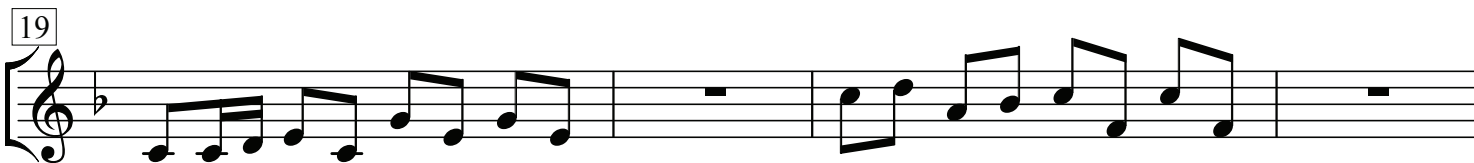
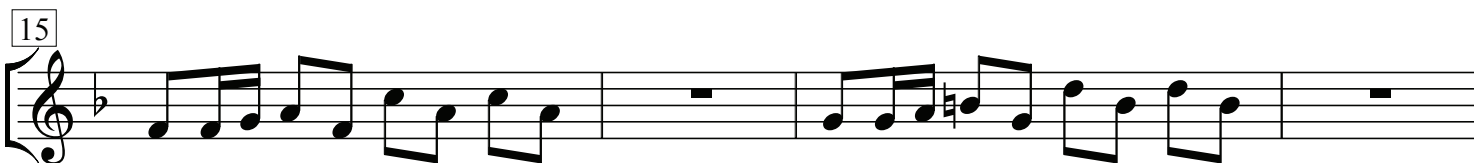
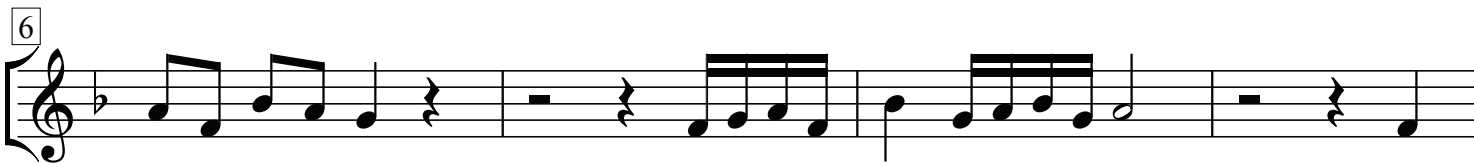
Samuel Scheidt - Intrada à5

Sopran 1



Samuel Scheidt - Intrada à 5

Sopran 2



Samuel Scheidt - Intrada à 5

Alt

5

9

16

23

29

36

43

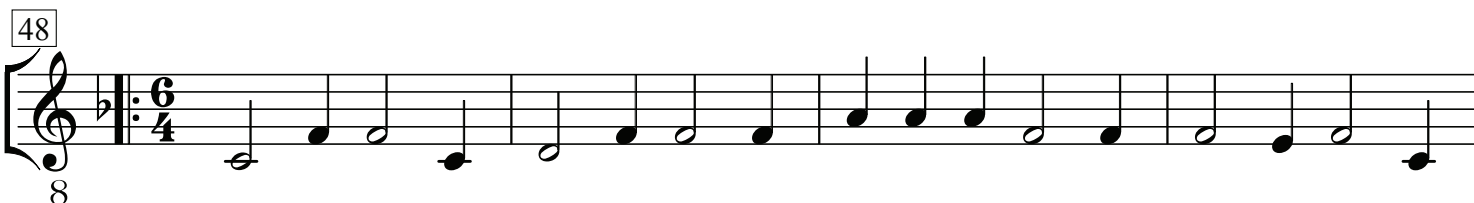
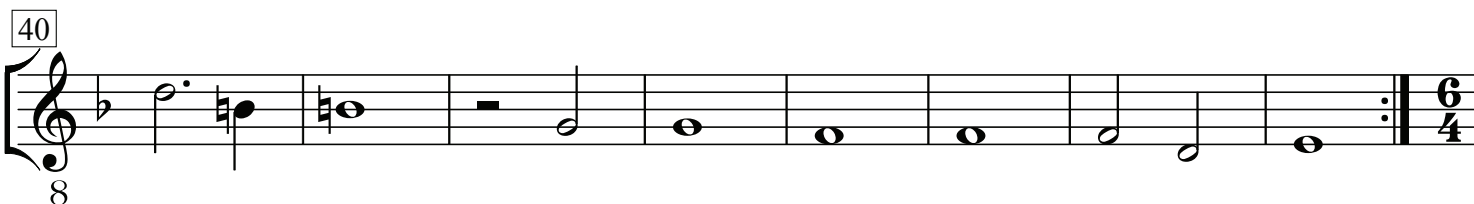
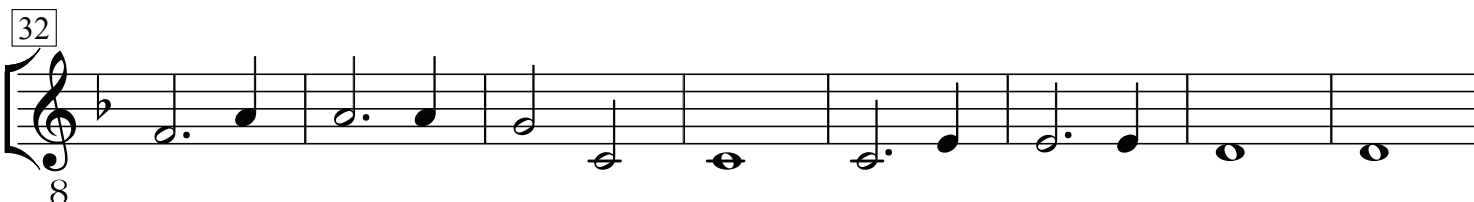
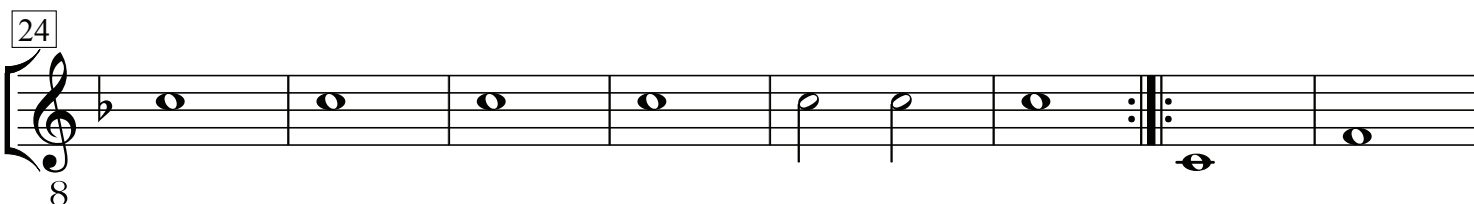
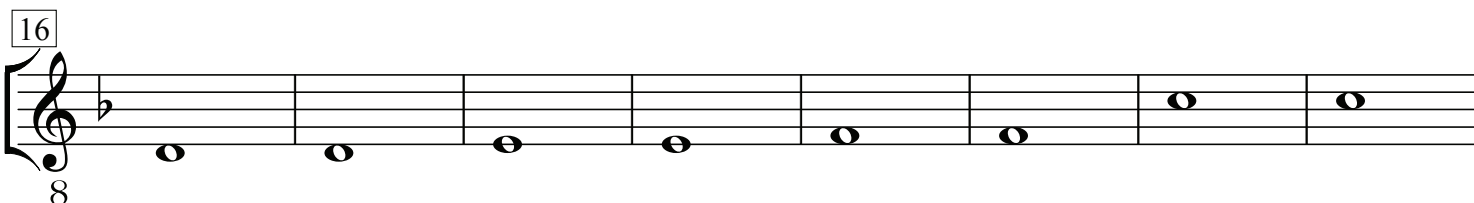
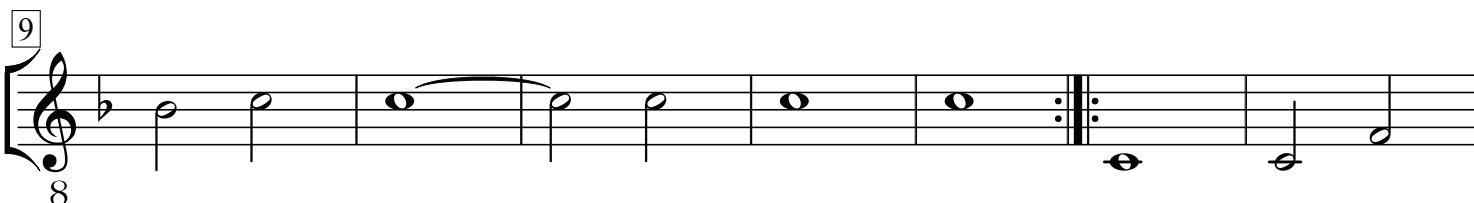
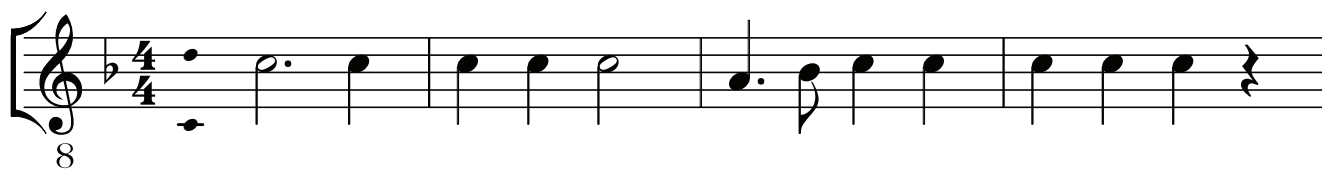
49

52

8

Samuel Scheidt - Intrada à5

Tenor



Samuel Scheidt - Intrada à5

Bass



The first system of the bass staff contains four measures of music in 4/4 time. The notes are: Measure 1: G2 (half note), A2 (half note). Measure 2: B2 (quarter note), C3 (quarter note), D3 (half note). Measure 3: E3 (quarter note), F3 (quarter note), G3 (half note). Measure 4: A3 (quarter note), B3 (quarter note), C4 (half note).

5


10

Musical notation for exercise 10, bass clef, 4/4 time. The melody starts on G2, moves to F2, then E2, and has a half note G2. The accompaniment consists of a steady eighth-note bass line: G2, F2, E2, D2, C2, B1, A1, G1.

18

Musical notation for measure 18, bass clef. The notes are: G₂, F₂, E₂, D₂, C₂, B₁, A₁, G₁, F₁, E₁.

28



32



36



40

44

Measure 44: Bass clef, 6/4 time signature. The measure contains a series of eighth and sixteenth notes, followed by a whole note, and ends with a double bar line and a repeat sign.

[illegible][illegible]